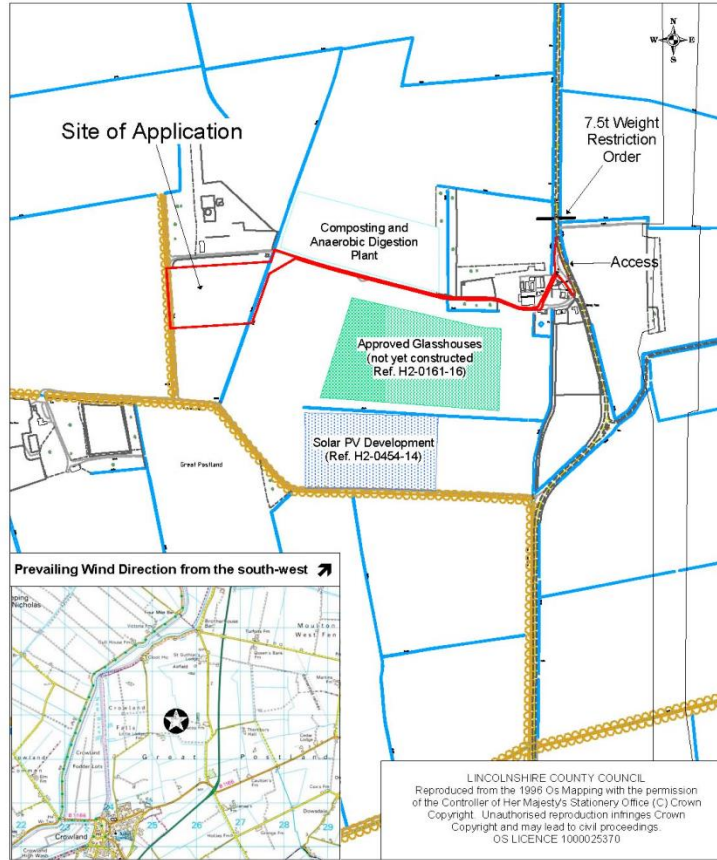


# 4.1 Crowland

LINCOLNSHIRE COUNTY COUNCIL  
PLANNING AND REGULATION COMMITTEE 3 SEPTEMBER 2018



**Location:**  
Decoy Farm  
Spalding Road  
Crowland

**Application No:** H02-0640-18

**Scale:** 1:8 000

**Description:**  
Proposed biomass CHP (combined heat and power) plant, waste water treatment plant and vertical food growing facility





- Key:
- 1 - Bin Store
  - 2 - Smoking Shelter
  - 3 - Cycle Rack
  - 4 - Rainwater Harvesting Tank
  - 5 - CO2 Storage
  - 6 - Hydrated Lime Silo



**NOTES:**  
 Height indicated are above AOD  
 --- 2.4m weldmesh fencing

- Tarmac
- Block paving
- Concrete

**cpmg** ARCHITECTURE INTERIOR DESIGN VEGETATION

CPMG Architects Ltd 33 Great Circle Nottingham NG2 7HG  
 Telephone: 0115 9521000 Email: info@cpmgarchitects.com  
 www.cpmgarchitects.com

Site Name  
**Crowland Biomass**

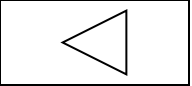
Site Name  
**Site Surface Finishes as proposed**

Drawing Title  
**PLANNING**

Sheet No.	Date	Prepared By	Scale
DP	18.01.2018	AJS	1:100
Sheet No.	Drawing No.	Revision	Mod No.
<b>8203</b>	<b>70-003</b>		<b>A1</b>

© Copyright of CPMG Architects Limited 2018. All rights reserved. No part of this  
 plan or drawing may be reproduced, stored in any retrieval system or transmitted in  
 any form or by any means, without prior permission of CPMG Architects Limited. See  
 also note from drawing. Use figures dimensions only. All dimensions to be checked  
 on site.

ISO 9001 QUALITY MANAGEMENT | 14001 ENVIRONMENTAL MANAGEMENT

























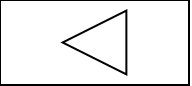




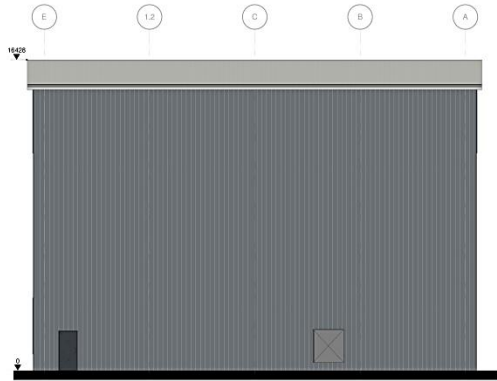




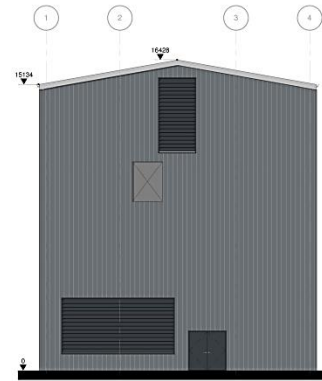




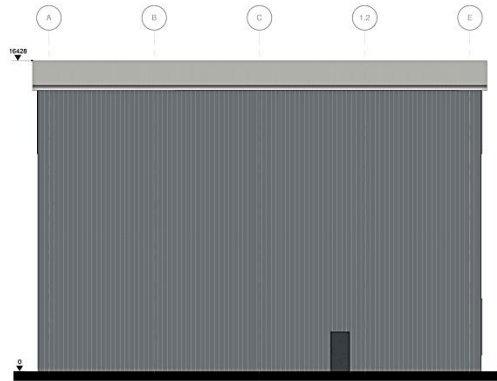
SCALE 1:100  
0 1 2 3 4 5  
m



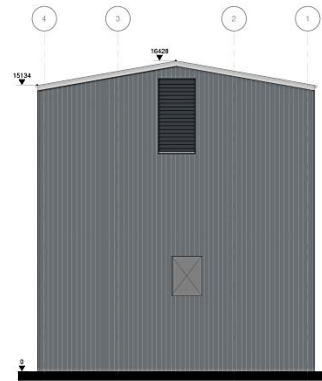
1 North Elevation  
1 : 100



3 East Elevation  
1 : 100



2 South Elevation  
1 : 100



4 West Elevation  
1 : 100

-  Walls - Dark ashvally grey - BS281 E32
-  Roof - Gossewing Grey - RAL 7038
-  Doors & Windows - Anthracite Grey - RAL 7016

**cpmg** ARCHITECTURE INTERIOR DESIGN VISUALIZATION

CPMG Architects Ltd 23 Water Gate Nottingham NG2 1PL  
 Telephone: 0115 952 7000 email: info@cpmgarchitects.com  
 www.cpmgarchitects.com

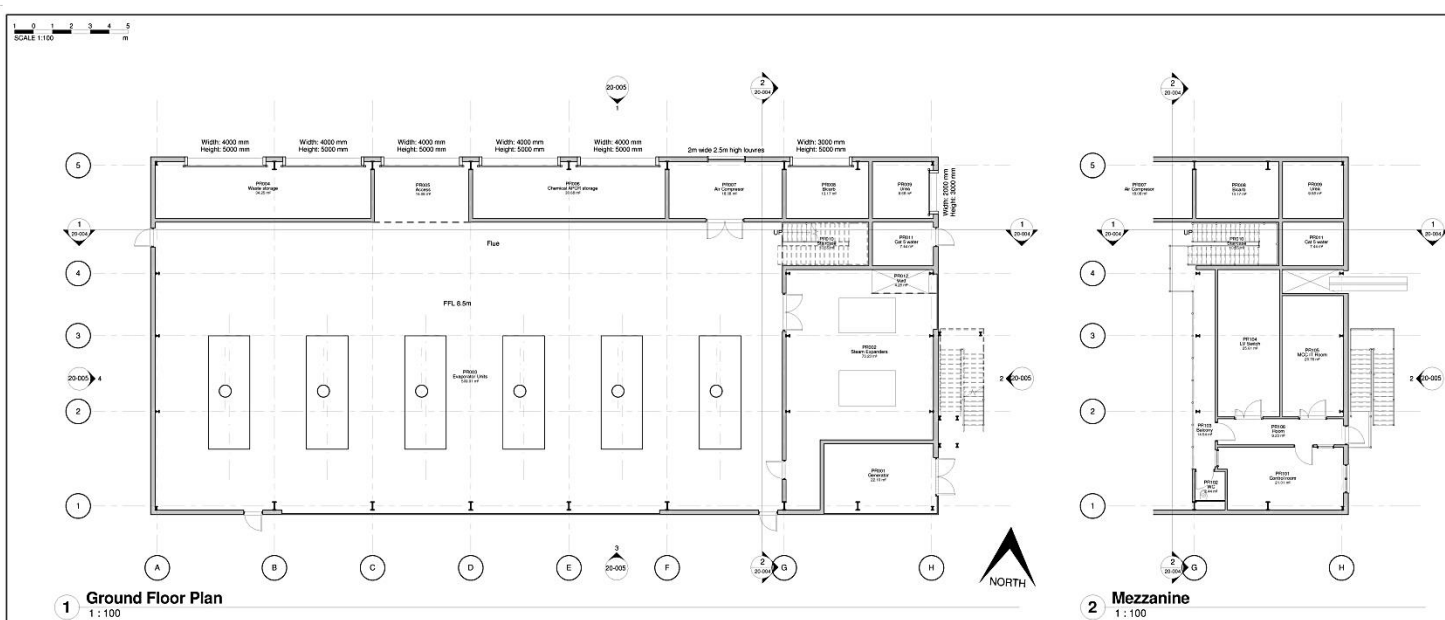
Job title  
**Crowland Biomass**

Jobing title  
**GA Elevations  
 Boiler House**

Jobing date  
**ISSUED FOR PLANNING**

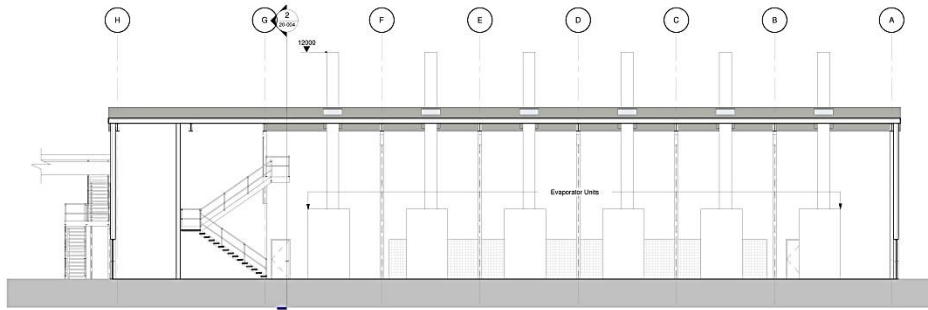
drawn by	date	checked by	scale
DP	28.03.2018	RIC	1:100
client	reference	project	model
<b>8400</b>	<b>20-008</b>		<b>A1</b>

Copyright © CPMG Architects Limited 2018. All rights reserved. No part of this publication may be reproduced, stored in a retrieval system or transmitted in any form or by any means, with or without permission of CPMG Architects Limited. This may include photocopying, recording, or by any information storage or retrieval system. All dimensions to be checked on site.  
 ISO 9001 QUALITY MANAGEMENT | ISO 14001 ENVIRONMENTAL MANAGEMENT



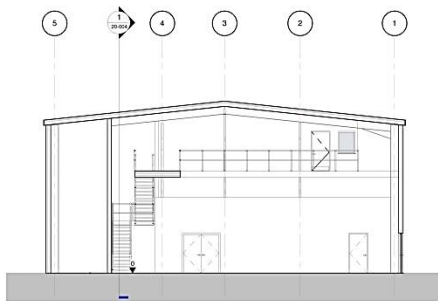
PT	8.10.2018	OP	Process comments incorporated	AC
Rev	date	By	Description	Notes
ARCHITECTURE INTERIOR DESIGN VERIFICATION				
CPMG Architects Ltd 23 Water Gate Nottingham NG2 1HQ Telephone: 0115 9321000 email: info@cpmgarchitects.com www.cpmgarchitects.com				
Job title <b>Crowland Biomass</b>				
Drawing title <b>Process Building GA Plans</b>				
Drawing status <b>ISSUED FOR PLANNING</b>				
drawn by	date	checked by	notes	
DP	18.01.2018	AS	1:100	
status	checked by	checked	checked	made
<b>8203</b>	<b>20-001</b>	<b>P1</b>	<b>A1</b>	
Copyright © CPMG Architects Limited 2018. All rights reserved. In part of this publication may be reproduced without the prior written permission of CPMG Architects Limited. No part may be reproduced without the prior written permission of CPMG Architects Limited. All dimensions to be checked on site. ISO 9001 QUALITY MANAGEMENT   ISO 14001 ENVIRONMENTAL MANAGEMENT				





■ Floor - Crosshatch Grey - RAL 7038

1 Section AA  
1:100



2 Section BB  
1:100

**cpmg** ARCHITECTURE INTERIOR DESIGN VEGETATION

**CPMG Architects Inc.** 23 Water Gate Nottingham NG2 1NS  
 Telephone: 0117 938 1000 Email: info@cpmag.com  
 www.cpmgarchitects.com

Job No  
 -

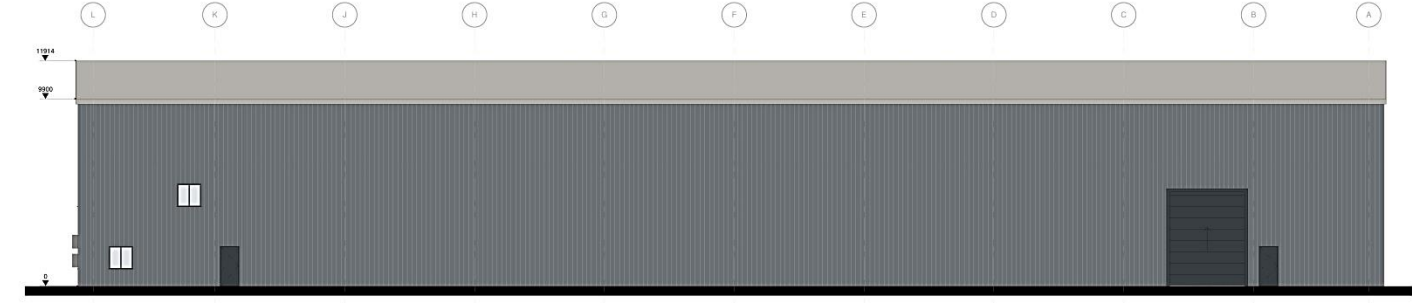
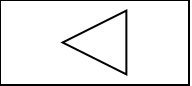
Client  
 Crowland Biomass

Drawing Title  
 Process Building  
 GA Sections

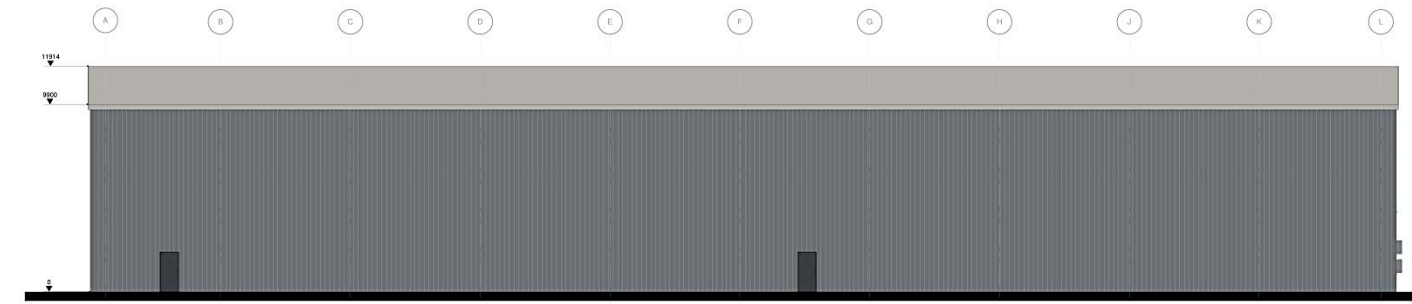
Drawing Status  
 ISSUED FOR PLANNING

Drawn by	Date	Checked by	Scale
DP	18.01.2018	AS	1:100
Proj No	8203	Revision	Phase
<b>8203</b>	<b>20-004</b>		<b>A1</b>

Copyright © CPMG Architects Limited 2018. All rights reserved. No part of this publication may be reproduced, stored in a retrieval system or transmitted in any form or by any means, without the prior permission of CPMG Architects Limited. Do not scale from drawing. Use figured dimensions only. All dimensions to be checked on site.  
 ISO 9001 QUALITY MANAGEMENT | ISO 14001 ENVIRONMENTAL MANAGEMENT



1 North Elevation  
1 : 100



3 South Elevation  
1 : 100

	Walls - Dark ashtray grey - RAL 7032
	Floor - Goose Grey - RAL 7038
	Doors & Windows - Anthracite Grey - RAL 7016

ISSUED FOR PLANNING

job title  
**Crowland  
 Vertical Farm**  
 drawing title  
**Elevations North & South  
 GA**

<b>cpmg</b> CPMG Architects Ltd Crowland, South East Angles, Norfolk London 217 St. Mary Street, London, EC1N 8JL www.cpmgarchitects.com		ARCHITECTURAL INTERIOR DESIGN REGISTRATION No: 0118 9168700 No: 0207 492 060 info@cpmagarchitects.com	
client ref	date	drawn by	checked by
AJS	06/02/2018	WEF	1:100
scale	revision no.	revision	no.
8388	20-003		A1

Copyright © CPMG Architects Limited 2017. All rights reserved. No part of this publication may be reproduced, stored in a retrieval system, or transmitted, in any form or by any means, electronic, mechanical, photocopying, recording, or by any information storage and retrieval system, without the prior written permission of CPMG Architects Limited. Some rights reserved. All other rights reserved. All dimensions to be checked prior to construction.

100 St. Mary Street, London  
 EC1N 8JL, England  
 Tel: +44 (0)20 7492 060  
 Fax: +44 (0)20 7492 060  
 www.cpmgarchitects.com

Page 22

**1 Section 1-1**  
1 : 500

**2 Section 2-2**  
1 : 500

**3 Section 3-3**  
1 : 500

**4 Section 4-4**  
1 : 500

**NOTES:**  
For finishes refer to elevation drawings.

**Key:**  
1 - Bin Store  
2 - Smoking Shelter  
3 - Cycle Rack  
4 - Rainwater Harvesting Tank  
5 - CO2 Storage  
6 - Hydrated Lime Silo

13.06.2018	CP	Approved contract documents	RIC
01.06.2018	CP	Approved contract documents	RIC
01.06.2018	CP	Approved contract documents	RIC
01.06.2018	CP	Approved contract documents	RIC

**cpmg** ARCHITECTURE INTERIOR DESIGN VERIFICATION

**CPMG Architects Ltd** 22 Water Gate Nottingham NG2 1HQ  
Telephone: 0115 9521000 email: info@cpmgarchitects.com  
www.cpmgarchitects.com

Job title  
**Crowland Biomass**

Jobing title  
**Site**

Jobing title  
**Site Sections**

Jobing title  
**ISSUED FOR PLANNING**

drawn by	date	checked by	notes
DP	18.01.2018	RIC	1:500
DP	18.01.2018	RIC	1:500
DP	18.01.2018	RIC	1:500

**8203 70-005 P2 A1**

Copyright © CPMG Architects Limited 2018. All rights reserved. No part of this publication may be reproduced, stored in a retrieval system or transmitted in any form or by any means, electronic, mechanical, photocopying, recording, or by any information storage and retrieval system, without the prior written permission of CPMG Architects Limited. This document is for the use of the client only. All dimensions to be checked on site.

ISO 9001 QUALITY MANAGEMENT | ISO 14001 ENVIRONMENTAL MANAGEMENT

0 5 10 15 20 25  
SCALE 1:500 m



